

Datatrak ONLINE

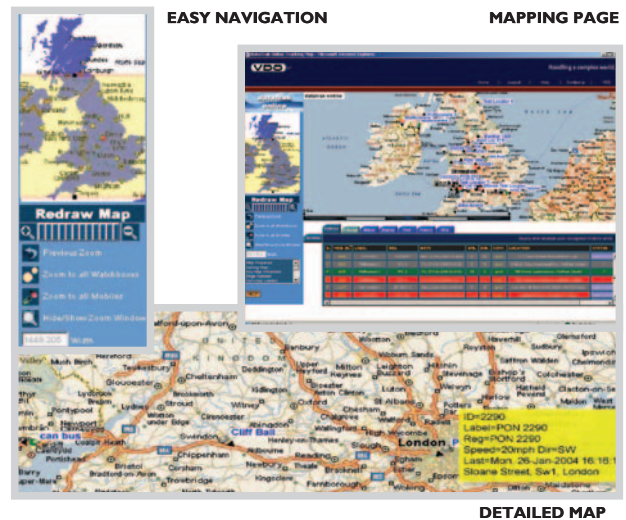
Datatrak Online is an on-line internet browser-based tracking system allowing clients to access location data of their mobile assets from any Internet ready computer, anywhere and at anytime.

IMPROVE

- Profitability
- Productivity
- Efficiency
- Accountability
- Customer Satisfaction
- Data accuracy
- Fleet utilisation
- Communications
- Service
- Management information

REDUCE

- Paper work
- Fuel expenses
- Labour costs
- Fleet maintenance costs
- Errors
- Disputes
- Journey times
- Delays



Authorised users to the Datatrak Online website can monitor Mobile asset (fleet or single) movements in real-time via secure authenticated access. Datatrak Online is a Management Information System, offering Management the necessary tools required to control operational expenses and accountability, maximise productivity and resource efficiency and prolong the life cycle of mobile assets.

APPLICATION FUNCTIONALITY

- Tracking & Positioning Information to manage fleets efficiently and productively
- Complete accountability (data and user access)
- Real-time, cost-efficient data, stored in a database Secure accessibility to authorised users (single or multiple) from any Internet-ready computer via an authenticated login procedure
- Customer managed users, vehicle user groups, access levels, custom definable screens and functionality. User selectable templates for preferred look and feel
- Fleet or individual asset location displayed graphically on mapping screen (MapPoint@.NET) with scale, pan, zoom out/in (down to street level) functionality
- On-line help with display and print options
- Creation and management of 'watchboxes' and the production of customised exception reporting
- In-built Gazetteer
- Automatic records of all trips, 24 hours a day, 7 hours a week
- Information remains confidential to authorised users
- Track, Trail and monitor individual vehicle/vessel or fleet
- Built-in Summary and Detailed Report Generator (standard, customised and ad hoc reports) 'Find' function - allows user to find the closest vehicle/s to a specific postcode or location
- Trip replay function to display historical data

TECHNICAL FEATURES

Location Data is acquired from:

- Datatrak RF Network I (LF) via AVL,
- Global Positioning System (GPS)

Transmission/reception available via the following networks:

- Datatrak RF Network I (UHF),
- Inmarsat-C (Satellite),
- Global System for Mobile Communications (GSM) via GPRS, SMS.

MAPPING

Datatrak Online employs MapPoint®.NET for global map data coverage. MapPoint®.NET is a hosted, programmable XML Web Service that locates latitude and longitude coordinates for street addresses, postal codes, landmarks, airports, and more in the United States, Canada, and most of Western and Eastern Europe. The MapPoint®.NET servers host the entire base map data needed for map rendering, geocoding, place finder and proximity searching, route creations, driving directions and distance calculations.



ADVANTAGES

- Accessible from any computer with Internet connectivity and browser software (Internet Explorer or Netscape)
- Platform independent – will work with all major operating systems featuring Internet Browser software
- No additional software installation or configuration required
- User friendly: quick and easy to learn
- Offers high level of customisation to meet unique customer requirements
- All data is stored in a database and is available for future referencing and reporting

BENEFITS

- Reduction of your drivers' unproductive time, curbing overtime thus lowering your payroll
- Improve response time by using the most cost effective routes and also re-route to avoid delays
- Maximum speed & idling reports help you reduce your fuel, tire, and maintenance costs
- The ability to review drivers' speeding habits resulting in greater safety, fewer accidents, and lower premiums
 - Eliminate unauthorised vehicle use during the day (and/or evening & weekend)
- Documented performance records, reducing billing errors, complaints, and company liability
- Better control helps improve driver safety and morale. Also enables the establishment of performance bonuses and other perks that weren't previously possible
- Protection of your fleet against theft, integrating the existing alarm system of the vehicle with the optional Events Activated Alarm Transmission feature

Designed for:



TERMS AND CONDITIONS APPLY